



LUMEN KING LED

GROW LIGHT 465W, 630W, 1000W

USER MANUAL

IMPORTANT SAFETY PRECAUTIONS & EXPLANATION OF SYMBOLS.....	2
GENERAL CARE.....	3
LUMEN KING LED GROW LIGHT 465W, 630W, 1000W.....	4-6
ASSEMBLY INSTRUCTIONS.....	7
TECHNICAL SPECIFICATIONS.....	8
PRODUCT DIMENSIONS.....	9-11
NOTES	12



IMPORTANT SAFETY PRECAUTIONS & EXPLANATION OF SYMBOLS

- Handle your Lumen King LED Grow Light System properly by thoroughly reading this manual prior to installation or operation. Be sure you understand all instructions before proceeding for a successful setup!
- To ensure a successful and long-lasting installation, remember to keep this manual in an easily accessible place for future reference. Safety is essential when properly configuring your system — follow the guidelines carefully!
- To ensure the safe installation of high power lighting systems, it is essential to read and abide by safety precautions. If you are not experienced in this area, enlisting a professional installer or getting help from us can provide peace of mind for your project.
- NOTE: Lumen King LED Grow Light Fixtures emit a dazzling, high-powered output that must not be tampered with while in operation - don't risk it!
- Ensure your system is always connected to an appropriate power source with the supplied plug and take extra caution while inserting into a wall outlet. Additionally, watch out for any potential damage that can be caused by crushing or stepping on cables.

- For optimal safety, make sure to use a polarized or grounding-type plug. Both feature two blades - one which is wider than the other -- while grounded plugs have an additional third prong for enhanced protection against electric shock and injury. If your outlet doesn't fit with the provided plug, consult an expert right away as it may be time to update your electrical setup! And when replacing cords, double check that you're using ones with matching ratings – or higher quality varieties if possible!
- Ensure your system is functioning to its optimum level by thoroughly following the instructions provided in the manual for cleaning. If any issues arise, it is best practice to have a qualified service personnel assess and address them before further use.

IF ANY OF THE FOLLOWING OCCUR, DO NOT HESITATE TO SEEK SERVICE

1. A malfunctioning power cord or plug could be the culprit behind your device woes
2. The unit has unfortunately been exposed to water, jeopardizing its condition and performance
3. Our unit has unfortunately sustained damage, compromising its security and functionality. Any dropped items or damaged casing must be addressed to ensure the continued effectiveness of our equipment



GENERAL CARE

Lumen King LED Grow Lights systems offer a sustainable, low-maintenance performance experience because they feature passively cooled components for optimal performance even in challenging weather conditions. With basic care, users can benefit from the high-quality peak results - cycle after cycle.

- For optimal cooling, it is essential to allow natural convection currents to effectively remove heat away from the system's heat sink. If a grow area's roof and console are too close together this can prevent these vital flows of hot air - ultimately reducing equipment longevity.
- To get the most out of your equipment, make sure to habitually check and clean its heat sink and LED array. Disconnecting it from power first will ensure safety while using low pressure compressed air or water is an effective means for rinsing away dirt deposits.
- A cloth can be damaging to a diode array; it may scratch or damage the silicone seal and even cause diodes to detach. To ensure optimal operation, use specialized cleaning methods for this delicate component.
- Even when it may seem harmless, never handle diodes with your hands while they're off- this can prevent them from deactivating correctly.

For all of your maintenance and cleaning needs, write Lumen King's support team for a comprehensive guide. Get the information you need to keep your products in perfect condition!

With LUMEN KING LED solutions, you'll enjoy a high-performance lighting experience.

For safety and efficiency purposes - please keep hands away from the system when in use! Once it's time to part ways with your packaging materials, remember that practicing good recycling habits can go a long way for future generations—it's their thank you gift to society.



LUMEN KING LED

GROW LIGHT 465W





LUMEN KING LED

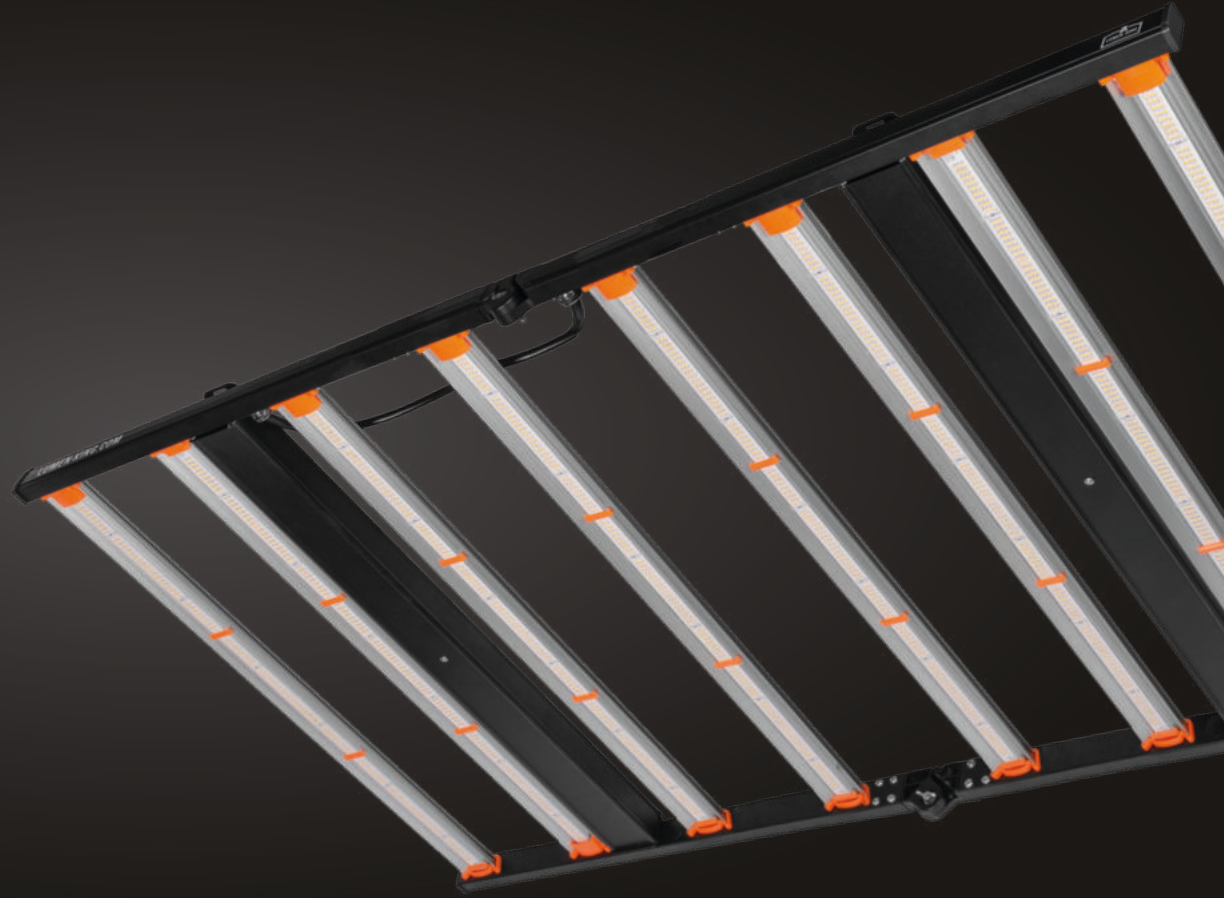
GROW LIGHT 630W





LUMEN KING LED

GROW LIGHT 1000W





ASSEMBLY INSTRUCTIONS

Take Caution when handling light bars. Ensure your LUMEN KING LED Grow light does not come in contact with sharp objects or force that may damage the diodes.

- 1 Unbox and unfold LUMEN KING LED Grow Light and place on flush, stable surface.
- 2 Loosen both retaining screws on your fixture so that you can open it without much effort.
- 3 Once the fixture is completely unfolded, you can retighten the bracket screws and secure the fixture with the appropriate hangers.

SAFETY NOTE: Be sure to remove the caps on the LED modules before hanging the fixture and putting it into operation. These are only for transport protection and must be removed before using the fixture.



TECHNICAL SPECIFICATIONS

All necessary technical specifications can be found in the table below.

We have recorded the most important features. If you have any questions, do not hesitate to ask our expert on our Website via the contact form.

SPECIFICATIONS	LED 465W	LED 630W	LED 1000W
Light Source	LED	LED	LED
Spectrum	Fullspectrum	Fullspectrum	Fullspectrum
PPF	1300 $\mu\text{mol/s}$	1650 $\mu\text{mol/s}$	2500 $\mu\text{mol/s}$
Input Power	465W	630W	1000W
Efficacy	2.9 $\mu\text{mol/J}$	2.6 $\mu\text{mol/J}$	2.7 $\mu\text{mol/J}$
Mounting Height	6" - 24" (15.2 - 60.3cm) Above Canopy	6" - 24" (15.2 - 60.3cm) Above Canopy	6" - 24" (15.2 - 60.3cm) Above Canopy
Dimming	0-10V Source	0-10V Source	0-10V Source
Dimensions/Weight	40,15" L x 39,37" W x 3,14" 26,45 lb 102 cm L x 60 cm W x 20 cm 12 kg	40,15" L x 39,37" W x 16,45" 26,45 lb 102 cm L x 60 cm W x 20 cm 12 kg	40,15" L x 39,37" W x 3,14" 26,45 lb 102 cm L x 100 cm W x 20 cm 12 kg

FOR DETAILED TECHNICAL INSTRUCTIONS AND SPECIFICATIONS,
PLEASE VISIT WWW.LUMEN-KING.COM



PRODUCT DIMENSIONS

Unlock new possibilities in the market with LUMEN KING LED GROW LIGHT 465W, a precise and versatile grow light with fantastic results.

With its innovative foldable design and superior quality led chips boasting exceptional efficiency, make your mark on large scale cultivation today!

LUMEN KING® LED GROW LIGHT 465 W

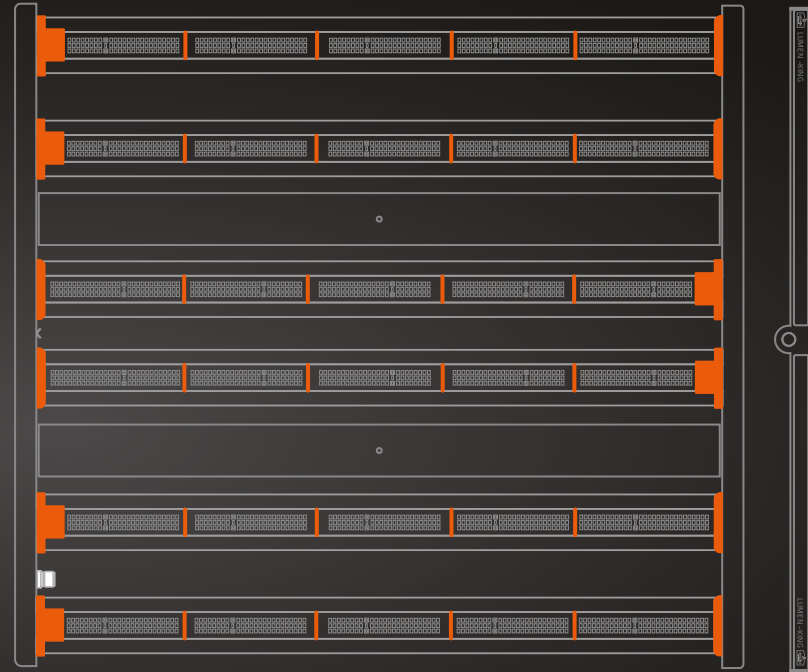
Technical Drawing

L: 40,15" | 102 cm

W: 39,37" | 100 cm

H: 3,14" | 20 cm

Weight: 26,45 lbs | 12 Kg



FOR DETAILED TECHNICAL INSTRUCTIONS AND SPECIFICATIONS,
PLEASE VISIT WWW.LUMEN-KING.COM



PRODUCT DIMENSIONS

Unlock new possibilities in the market with LUMEN KING LED GROW LIGHT 630W, a precise and versatile grow light with fantastic results. With its innovative foldable design and superior quality led chips boasting exceptional efficiency, make your mark on large scale cultivation today!

LUMEN KING® LED GROW LIGHT 630 W

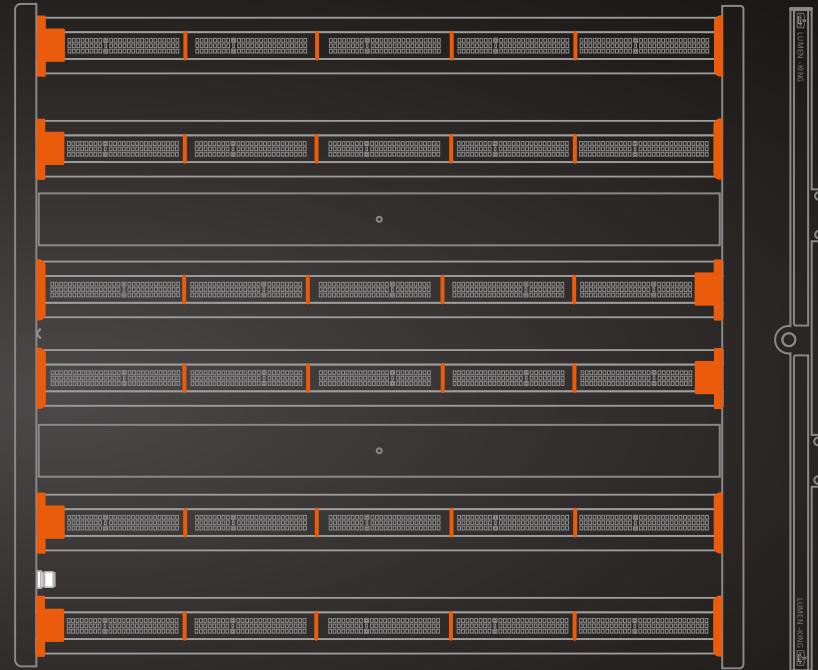
Technical Drawing

L: 40,15" | 102 cm

W: 39,37" | 100 cm

H: 3,14" | 20 cm

Weight: 26,45 lbs | 12 Kg



FOR DETAILED TECHNICAL INSTRUCTIONS AND SPECIFICATIONS,
PLEASE VISIT WWW.LUMEN-KING.COM



PRODUCT DIMENSIONS

Unlock new possibilities in the market with **LUMEN KING LED GROW LIGHT 1000W**, a precise and versatile grow light with fantastic results. With its innovative foldable design and superior quality led chips boasting exceptional efficiency, make your mark on large scale cultivation today!

LUMEN KING® LED GROW LIGHT 1000 W

Technical Drawing

L: 40,15" | 102 cm

W: 39,37" | 100 cm

H: 3,14" | 20 cm

Weight: 26,45 lbs | 12 Kg



FOR DETAILED TECHNICAL INSTRUCTIONS AND SPECIFICATIONS,
PLEASE VISIT WWW.LUMEN-KING.COM



Review our products, share your grow and stay abreast of the latest
LUMEN KING news and product releases through the channels below:



LUMEN KING

© COPYRIGHT 2023. DENTRAX B.V.

2023-02

